



MONTHLY MEMBERSHIP PROGRESS REPORT

District 31 J

Results as of: 3/31/2015

GMT: CARL HARRELL

LOCATION NORTH CAROLINA

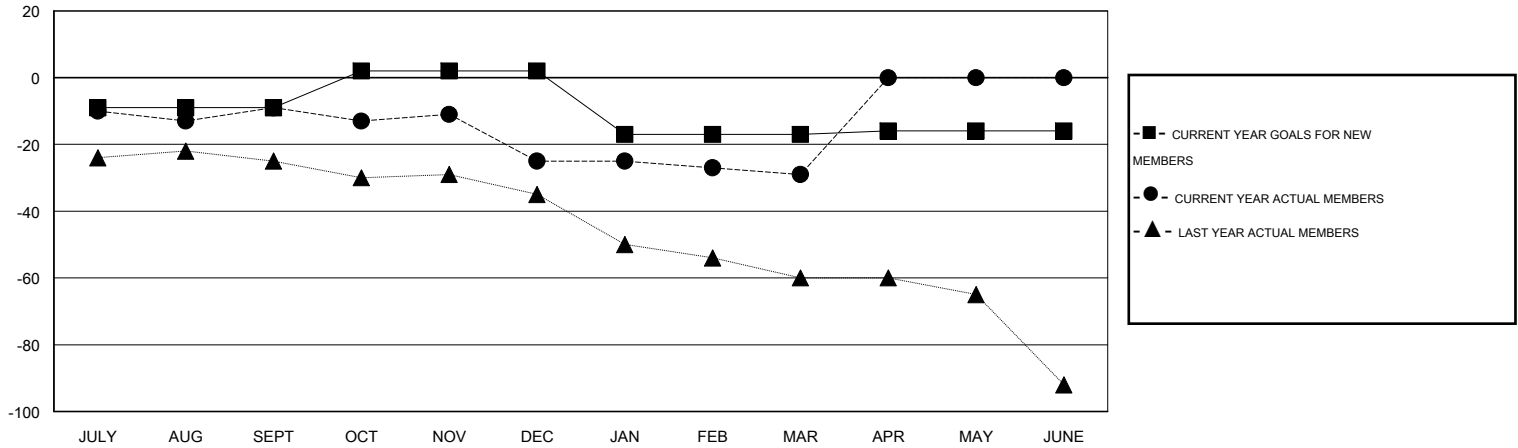
GMT CA 1

| Clubs | | | | | Members | | | | |
|-----------------------|---------------|-----------|---------------|---------------|-----------------------|-----------------|-------------------------------|-----------------|---------------|
| RESULTS FOR 2014-2015 | | | | | RESULTS FOR 2014-2015 | | | | |
| QUARTER | NEW CLUB GOAL | NEW CLUBS | DROPPED CLUBS | NET GAIN/LOSS | QUARTER | NEW MEMBER GOAL | CHARTER AND NEW MEMBERS ADDED | DROPPED MEMBERS | NET GAIN/LOSS |
| JULY/AUG/SEPT | 0 | 0 | 0 | 0 | JULY/AUG/SEPT | -9 | 17 | 26 | -9 |
| OCT/NOV/DEC | 1 | 0 | 1 | -1 | OCT/NOV/DEC | 11 | 9 | 25 | -16 |
| JAN/FEB/MAR | 0 | 0 | 0 | 0 | JAN/FEB/MAR | -19 | 16 | 20 | -4 |
| APR/MAY/JUNE | 1 | 0 | 0 | 0 | APR/MAY/JUNE | 1 | 0 | 0 | 0 |

GOALS AND ACTUAL NEW CLUBS CUMULATIVE



GOALS AND ACTUAL MEMBERS CUMULATIVE



| | | |
|------------------------|---|--------------------------------|
| DROPPED CLUBS: 1 | 17 CLUBS OF 41 ADDED 1 OR MORE NEW MEMBERS | GENDER DISTRIBUTION |
| | | MALE 502 (68.67%) |
| | | FEMALE 229 (31.33%) |
| DROPPED MEMBERS | CLICK HERE FOR HEALTH ASSESSMENT DATA | FAMILY UNIT MEMBERS 162 |
| DECEASED 8 | | HEAD OF HOUSEHOLD 78 |
| CLUB CANCELLED 14 | | NON-HEAD OF HOUSEHOLD 84 |
| OTHER 49 | | |
| TOTAL 71 | | |